

**THE ECONOMY AT A GLANCE**

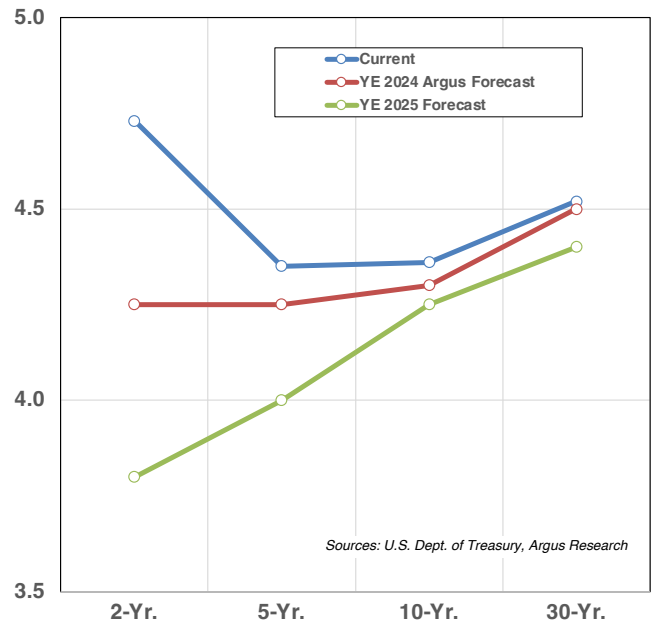
**ECONOMIC HIGHLIGHTS**

June 3, 2024  
Vol. 91, No. 79

**YIELD CURVE HEADED TOWARD UPWARD SLOPE**

The yield curve has been inverted for months now. But what has changed over the past year is that the inversion isn't so steep. Back in April 2023, 2-year Treasury yields were about 100 basis points above 10-year yields. Now the gap is 35 basis points. There are a couple of reasons for this change and, in our view, they point toward an upcoming shift to a normal upward-sloping curve in the next few quarters. First, U.S. economic trends have been positive. Fixed-income investors have moved away from fears of deflation and are again seeking a premium in yields versus inflation. That has lifted rates across the yield curve. Second, the Fed finally is in front of the inflation curve. The central bank is now building a cushion, or a gap, between fed funds and core PCE in order to push inflation back toward 2.0%. This is all well and good -- but if the Fed's gap is too wide for too long, the central bank risks tipping the economy into a recession (which is allegedly what the inverted yield curve is signaling). Fed Chairman Jerome Powell has explained to financial markets that he and his colleagues want to continue fighting stubborn inflation, so they are likely to keep short-term rates high for an extended period of time. But the day will come when the data shows that the central bank has brought inflationary pressures to bay, and it will then start to lower rates in order to keep the economy growing. We think that first rate cut will be in September, with a second cut after the U.S. presidential election. Assuming those lower rates keep the economy in a growth gear, longer-term rates should remain stable and the yield curve should once again slope upward.

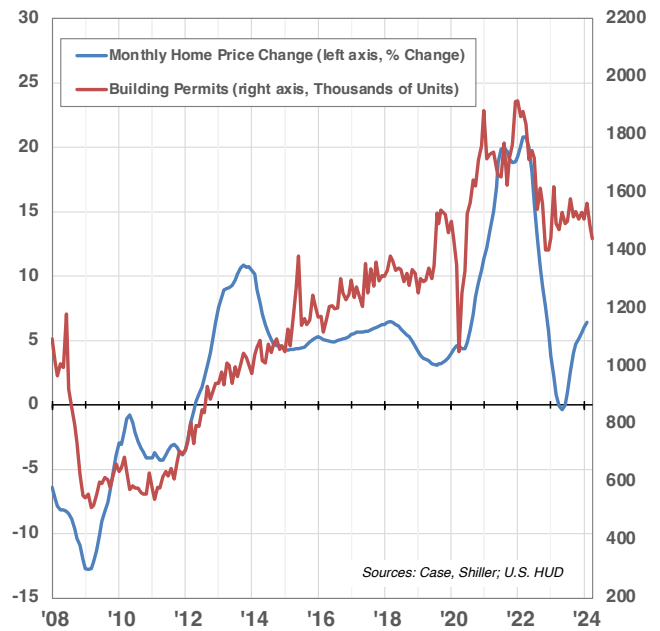
**YIELD CURVE & OUTLOOK (%)**



## HOUSING NEEDS RATE RELIEF

The underlying fundamentals of the housing market remain strong. Still, mortgage rates above 7% are pushing prospective buyers to the sidelines and could turn housing from being a contributor to 2024 economic growth to being a drag unless the economy gets rate relief. Homebuilder confidence declined for the first time since November 2023, according to the May National Association of Home Builders/Wells Fargo Housing Market Index. “The market has slowed down since mortgage rates increased and this has pushed many potential buyers back to the sidelines,” NAHB Chairman Carl Harris said after mortgage rates topped 7% for a fourth consecutive week. Other industry executives see strong drivers of long-term demand. “While it appears interest rates will remain higher for slightly longer, the market continues to remain massively underbuilt and pent-up demand is only being exacerbated,” said Nicholas Fink, CEO of Fortune Brands Innovations, whose products include Moen faucets, Therma Tru doors, and Master Locks. Based on the May 16 GDPNow estimate from the Atlanta Fed, residential fixed investment is expected to make a small positive contribution to 2Q GDP, but there are risks from new data that looks lackluster. High mortgage rates are a challenge, but we remain bullish on the sector because demographics point to strong demand amid a decades-long shortage of affordable homes.

### HOUSING MARKET TRENDS

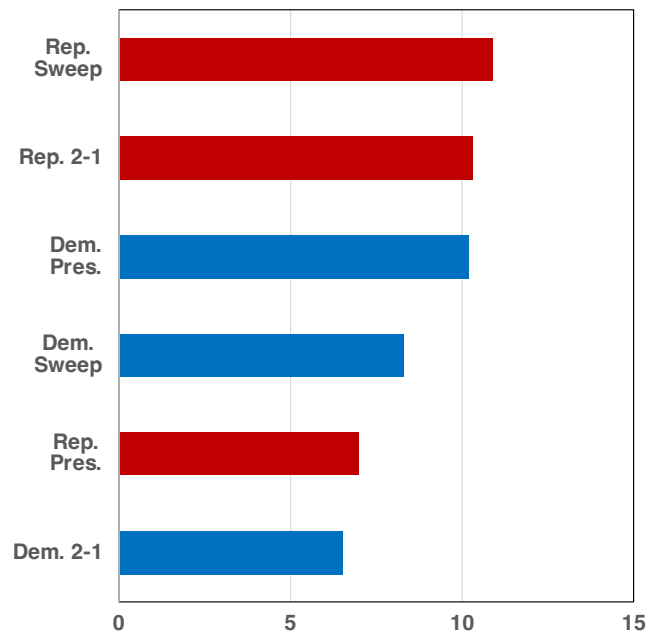


# FINANCIAL MARKET HIGHLIGHTS

## POLITICAL PARTIES DON'T ALWAYS IMPACT MARKET RETURNS

The U.S. presidential election is approaching. But it's not just the presidency that's up for grabs, as control for the House of Representatives and Senate also will be contested. The popular Wall Street wisdom is that the best outcome in Washington is gridlock. But our analysis does not substantiate that widely held perception. Our work suggests that the market actually outperformed in years in which one party prevailed, though the results fail to establish a clear pattern. We start with the base-line 9% annual average market performance since 1945. Political scenarios that topped this average included a Republican president and Congress (+10.9%), and Republicans controlling the White House and either the House or the Senate (+10.3%). Still, in years in which the White House was occupied by a Democrat, stocks also outperformed (+10.2%). Heading into November voting, current odds favor a Republican president, a Republican House of Representatives, and a toss-up for the Senate. At stake is a party's ability to set tax and fiscal policy and a trade and regulatory agenda, while also selecting the Cabinet and members of the Federal Reserve.

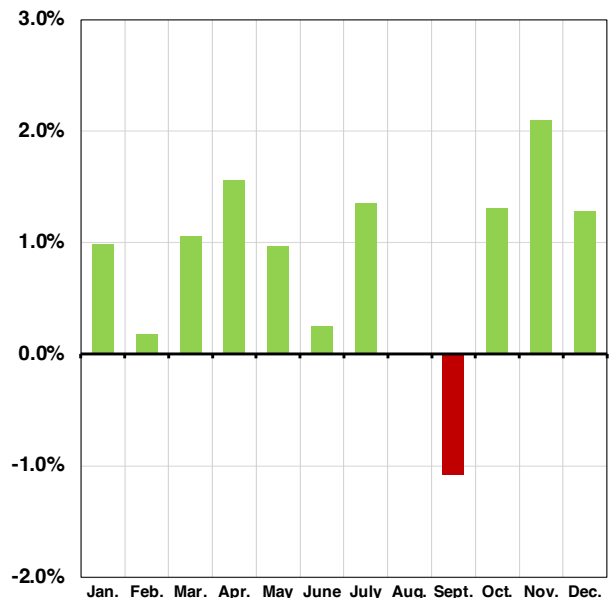
STOCK PERFORMANCE IN POLITICAL SCENARIOS (AVG ANNUAL S&P 500 % CHANGE)



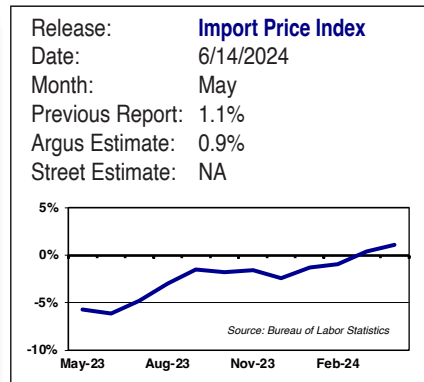
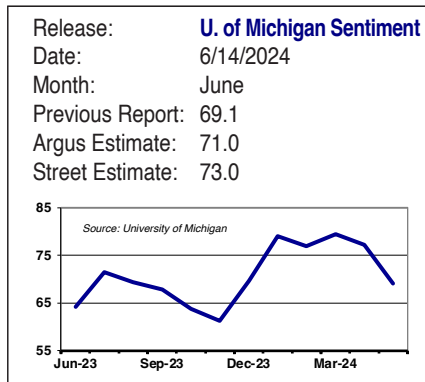
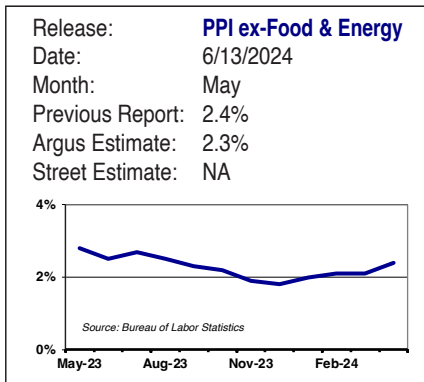
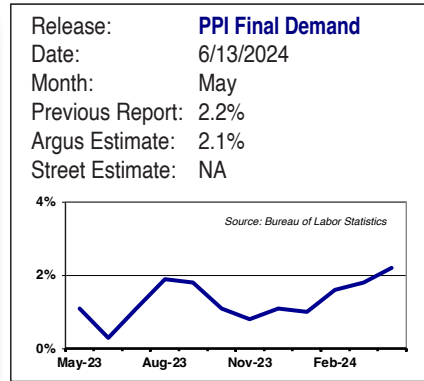
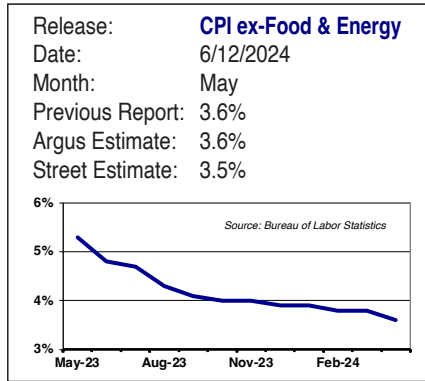
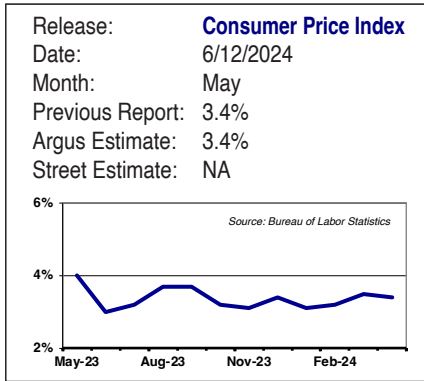
## JUNE JINX?

June is not one of the better months for stocks, according to our analysis of market returns since 1980. On average, equity investors in June eke out a 0.2% positive return for the month -- better than only the weakest months of February, August, and September. The winning percentage is 61%, higher than only the 3Q summer months. We note that market returns in June have exceeded 5% only three times in the past 37 years. Clunkers? We have seen a few, including 2008 (-8.6%), 2002 (-7.2%), 2010 (-6.1%), and 1991 (-4.8%). June typically is a quiet month for earnings, as the second quarter draws to a close. But don't be surprised by fireworks on the economic, interest rate, and inflation fronts. The nonfarm payrolls report will be watched to determine the strength of the employment and thus consumer segments of the economy. The Federal Reserve meets and is not expected to lower the federal funds rate, but may signal intentions for the balance of the year. Inflation data released mid-month should indicate that pricing pressures continue to moderate from peak established two years ago. That slowdown in inflation has spurred a bull market that has climbed approximately 40% since bottoming in October 2022. We'll see if returns can withstand the June jinx.

AVERAGE MONTHLY S&P 500 APPRECIATION



# ECONOMIC TRADING CHARTS & CALENDAR



*Previous Week's Releases and Next Week's Releases on next page.*

## ECONOMIC TRADING CHARTS & CALENDAR (CONTINUED)

### Previous Week's Releases

Date	Release	Month	Previous Report	Argus Estimate	Street Estimate	Actual
3-Jun	ISM Manufacturing	May	49.2	50.1	49.7	<b>47.8</b>
	ISM New Orders	May	49.1	50.1	NA	<b>45.4</b>
	Construction Spending	April	<b>10.5%</b>	9.1%	NA	<b>10.0%</b>
4-Jun	Factory Orders	April	1.5%	1.3%	NA	NA
5-Jun	ISM Services Index	May	49.4	50.1	50.7	NA
6-Jun	Trade Balance	April	-\$69.4 Bil.	-\$70.0 Bil.	-\$69.4 Bil.	NA
7-Jun	Nonfarm Payrolls	May	175 K	168 K	185 K	NA
	Unemployment Rate	May	3.9%	3.9%	3.9%	NA
	Average Weekly Hours	May	34.3	34.3	34.3	NA
	Average Hourly Earnings	May	3.9%	3.9%	NA	NA
	Wholesale Inventories	April	-2.3%	-1.9%	NA	NA
	Total Vehicle Sales	May	15.75 mln.	15.85 mln.	NA	NA

### Next Week's Releases

Date	Release	Month	Previous Report	Argus Estimate	Street Estimate	Actual
18-Jun	Industrial Production	May	-0.4%	NA	NA	NA
	Capacity Utilization	May	78.4%	NA	NA	NA
	Retail Sales	May	3.0%	NA	NA	NA
	Retail Sales ex-autos	May	3.6%	NA	NA	NA
	Business Inventories	April	0.7%	NA	NA	NA
20-Jun	Housing Starts	May	1,360 K	NA	NA	NA
21-Jun	Existing Home Sales	May	4.14 Mln.	NA	NA	NA
	Leading Index	May	-0.6%	NA	NA	NA

## Disclaimer

---

Argus Research Co. (ARC) is an independent investment research provider whose parent company, Argus Investors' Counsel, Inc. (AIC), is registered with the U.S. Securities and Exchange Commission. Argus Investors' Counsel is a subsidiary of The Argus Research Group, Inc. Neither The Argus Research Group nor any affiliate is a member of the FINRA or the SIPC. Argus Research is not a registered broker dealer and does not have investment banking operations. The Argus trademark, service mark and logo are the intellectual property of The Argus Research Group, Inc. The information contained in this research report is produced and copyrighted by Argus Research Co., and any unauthorized use, duplication, redistribution or disclosure is prohibited by law and can result in prosecution. The content of this report may be derived from Argus research reports, notes, or analyses. The opinions and information contained herein have been obtained or derived from sources believed to be reliable, but Argus makes no representation as to their timeliness, accuracy or completeness or for their fitness for any particular purpose. In addition, this content is not prepared subject to Canadian disclosure requirements. This report is not an offer to sell or a solicitation of an offer to buy any security. The information and material presented in this report are for general information only and do not specifically address individual investment objectives, financial situations or the particular needs of any specific person who may receive this report. Investing in any security or investment strategies discussed may not be suitable for you and it is recommended that you consult an independent investment advisor. Nothing in this report constitutes individual investment, legal or tax advice. Argus may issue or may have issued other reports that are inconsistent with or may reach different conclusions than those represented in this report, and all opinions are reflective of judgments made on the original date of publication. Argus is under no obligation to ensure that other reports are brought to the attention of any recipient of this report. Argus shall accept no liability for any loss arising from the use of this report, nor shall Argus treat all recipients of this report as customers simply by virtue of their receipt of this material. Investments involve risk and an investor may incur either profits or losses. Past performance should not be taken as an indication or guarantee of future performance. Argus has provided independent research since 1934. Argus officers, employees, agents and/or affiliates may have positions in stocks discussed in this report. No Argus officers, employees, agents and/or affiliates may serve as officers or directors of covered companies, or may own more than one percent of a covered company's stock. Argus Investors' Counsel (AIC), a portfolio management business based in Stamford, Connecticut, is a customer of Argus Research Co. (ARC), based in New York. Argus Investors' Counsel pays Argus Research Co. for research used in the management of the AIC core equity strategy and model portfolio and UIT products, and has the same access to Argus Research Co. reports as other customers. However, clients and prospective clients should note that Argus Investors' Counsel and Argus Research Co., as units of The Argus Research Group, have certain employees in common, including those with both research and portfolio management responsibilities, and that Argus Research Co. employees participate in the management and marketing of the AIC core equity strategy and UIT and model portfolio products. Recipients of the Research reports in Singapore should contact the Intermediary of the Research Reports in respect to any matters arising from, or in connection with, the analysis of the report. Where the recipient is not an accredited, expert or institutional investor as defined by the Securities and Futures Act, the Intermediary accepts legal responsibility for the contents of Research Reports in respect of such recipient in accordance with applicable law. When reports are distributed by Intermediaries in Singapore, the Intermediary, and not Argus Research, is solely responsible for ensuring that the recipients of the Research Reports understand the information contained in the Research Reports and that such information is suitable based on the customer's profile and investment objectives.

